

## How to make a getabrandnewpassword.com (GBNP) WinPE-ISO -image for changing Windows' Built-in Administrator's password

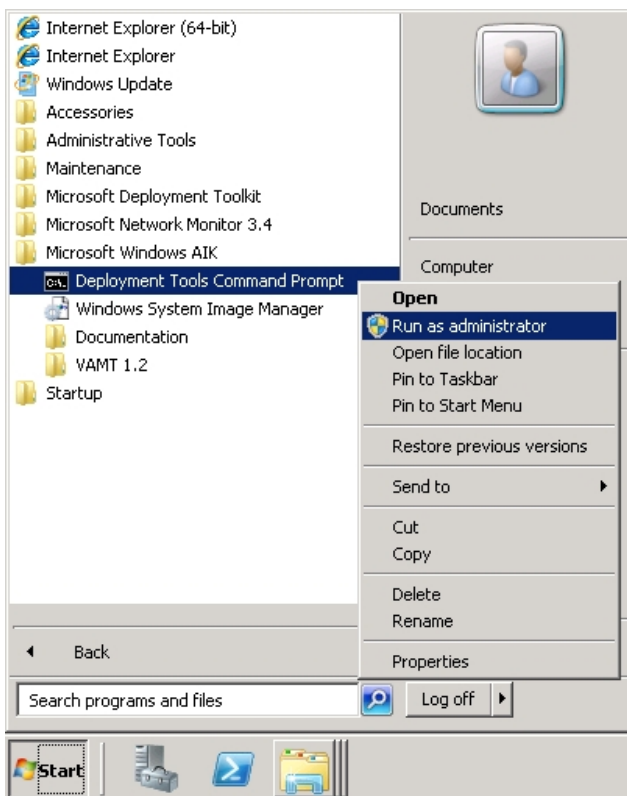
Download and install WAIK (Windows Automated Installation Kit for Windows 7)

<http://www.microsoft.com/downloads/en/details.aspx?familyid=696DD665-9F76-4177-A811-39C26D3B3B34&displaylang=en>

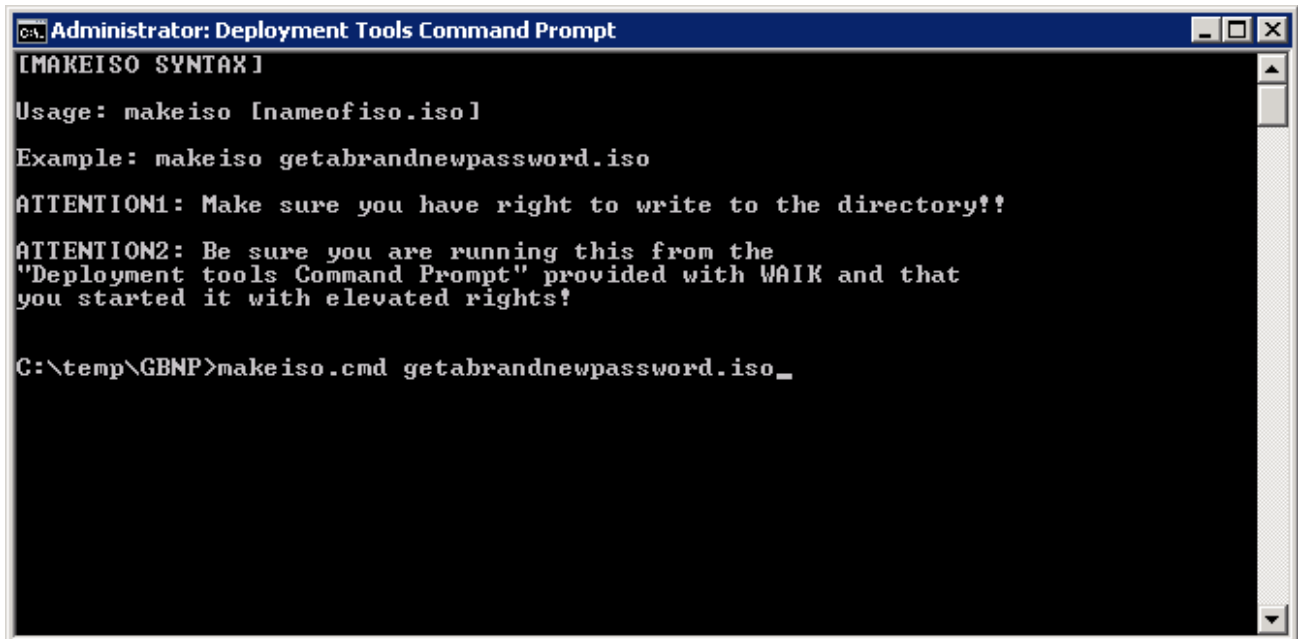
Extract GBNP-getabrandnewpassword.com.zip file to computer, for example to folder C:\temp\GBNP.

Copy optional network and hard disk inf driver files to folder C:\temp\GBNP\DRIVERS. These drivers are injected to WinPE.

### Start the "Deployment Tools Command Prompt" with Administrative Rights



Go to the directory where the scripts are and run command: `makeiso.cmd getabrandnewpassword.iso`

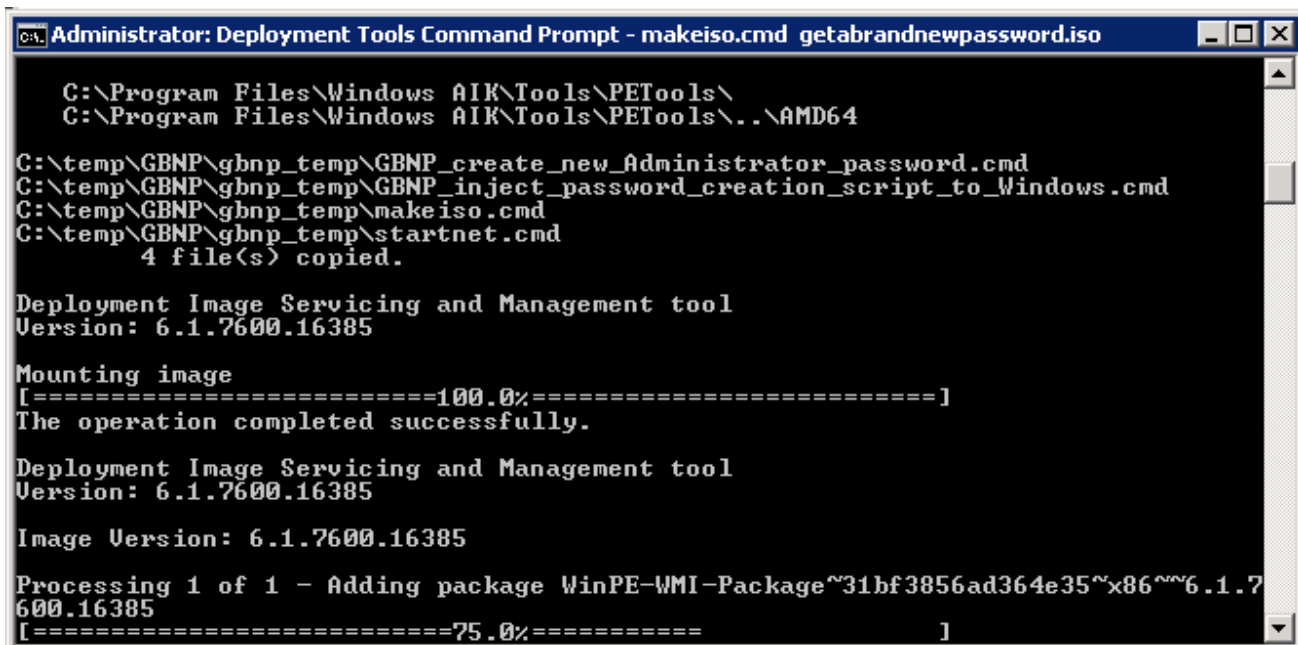


```
Administrator: Deployment Tools Command Prompt
[MAKEISO SYNTAX]
Usage: makeiso [nameofiso.iso]
Example: makeiso getabrandnewpassword.iso
ATTENTION1: Make sure you have right to write to the directory!!
ATTENTION2: Be sure you are running this from the
"Deployment tools Command Prompt" provided with WAIK and that
you started it with elevated rights!

C:\temp\GBNP>makeiso.cmd getabrandnewpassword.iso_
```

Rest of the process is totally automated and takes only a few minutes - you don't have to do anything.

Here are some screenshots you will see in the process.



```
Administrator: Deployment Tools Command Prompt - makeiso.cmd getabrandnewpassword.iso
C:\Program Files\Windows AIK\Tools\PETools\
C:\Program Files\Windows AIK\Tools\PETools\..\AMD64
C:\temp\GBNP\gbnp_temp\GBNP_create_new_Administrator_password.cmd
C:\temp\GBNP\gbnp_temp\GBNP_inject_password_creation_script_to_Windows.cmd
C:\temp\GBNP\gbnp_temp\makeiso.cmd
C:\temp\GBNP\gbnp_temp\startnet.cmd
4 file(s) copied.

Deployment Image Servicing and Management tool
Version: 6.1.7600.16385

Mounting image
[=====100.0%=====]
The operation completed successfully.

Deployment Image Servicing and Management tool
Version: 6.1.7600.16385

Image Version: 6.1.7600.16385

Processing 1 of 1 - Adding package WinPE-WMI-Package~31bf3856ad364e35~x86~6.1.7
600.16385
[=====75.0%===== ]
```

```
Administrator: Deployment Tools Command Prompt - makeiso.cmd getabrandnewpassword.iso

Image File : C:\temp\GBNP\gbnb\winpe.wim
Image Index : 1
Saving image
[=====100.0%=====]
Unmounting image
[=====100.0%=====]
The operation completed successfully.
    1 file(s) copied.

OSCDIMG 2.55 CD-ROM and DUD-ROM Premastering Utility
Copyright (C) Microsoft, 1993-2007. All rights reserved.
Licensed only for producing Microsoft authorized content.

Scanning source tree
Scanning source tree complete (17 files in 8 directories)

Computing directory information complete

Image file is 153651200 bytes

Writing 17 files in 8 directories to C:\temp\GBNP\gbnb\getabrandnewpassword.iso
2% complete
```

```
Administrator: Deployment Tools Command Prompt

Congratulations!
-----
Your ISO is now ready to be burned to a CD/DVD/BD at C:\temp\GBNP\getabrandnewpassword.iso

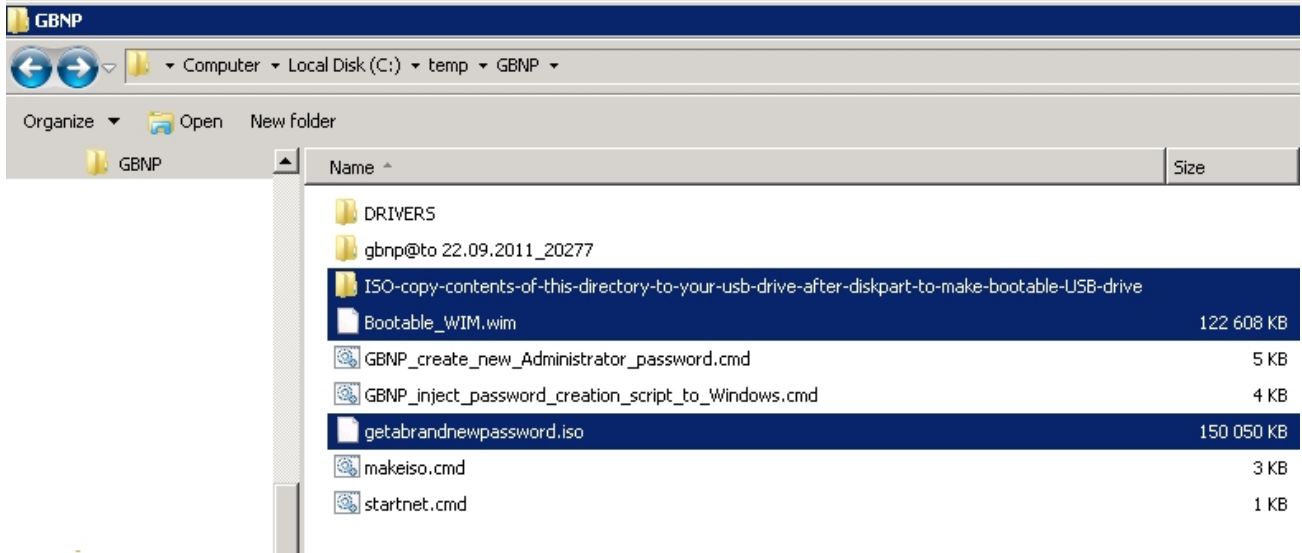
After burning the CD/DVD/BD you can just boot up the locked computer with it!

If you need the WIM-file it is stored at C:\temp\GBNP\Bootable_WIM.wim

If you need instructions for making a bootable USB-stick please refer
to our website at http://www.getabrandnewpassword.com/

C:\temp\GBNP>
```

In directory **C:\temp\gbnp** you will find the **getabrandnewpassword.iso** -file and project files. Copy and store all of the files and folders. You will need these if you are going to make a bootable USB-drive.



Burn the ISO-image **getabrandnewpassword.iso** to a CD/DVD/BD-disc, make a Bootable USB-drive (more instructions on <http://www.getabrandnewpassword.com/Instructions.html> ) or use the **Bootable\_WIM.wim** for WDS etc.